

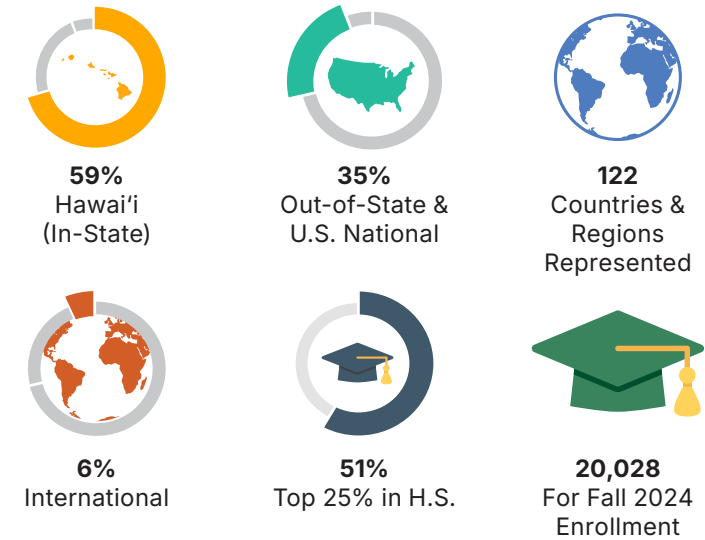


UNIVERSITY
of HAWAII®
MĀNOA

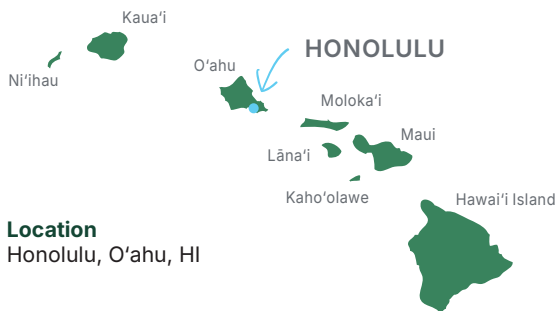
College of Engineering

The College of Engineering at the University of Hawai'i is dedicated to world-class education and research. We produce the entrepreneurial and innovative human and intellectual capital required to be competitive in an increasingly technological and global society. Through our graduates and our research, we provide people and discoveries to transform lives and to support vibrant, knowledge-based economies. We are inspired by the principles of sustainability and resilience, flavored by our unique island environment.

UH Mānoa Student Characteristics



32.2% Asian*	27.7% Caucasian
18% Native Hawaiian*	17.1% Two or more races
1.8% Hispanic	1.9% African American
0.7% American Indian or Alaskan Native	0.6% Unknown
*Asian: 9.8% - Filipino 5% - Japanese 4.1% - Chinese 1.5% - Korean 9.5% - Mixed Asian 2.3% - Other Ethnicities	*Native Hawaiian or Other Pacific Islander: 16.6% - Native Hawaiian or Part Hawaiian 1.3% - Other Pacific Islander *Only U.S. citizens are included in this calculation



Campus Size
320 Acres

Accreditation
Western Association of Schools and Colleges (WASC)

Institution Type
Land, Sea, Sun, and Space Grant Research Institution

Top 2%
UH Mānoa is consistently ranked among the top 2% of nearly 24,000 universities in the world!



Scan the QR code to learn more.

eng.hawaii.edu [f](#) [i](#) [in](#)

engr@eng.hawaii.edu
UH College of Engineering 2540
Dole Street, Holmes Hall 240
Honolulu, HI 96822
(808) 956-7727
The University of Hawai'i at Mānoa is an equal opportunity institution.

UNIVERSITY of HAWAII® at MĀNOA
COLLEGE of ENGINEERING