



## INTELLIGENT SYSTEMS

### *Connected Vehicles*

---



JOIN US FOR A PRESENTATION ABOUT  
OUR R&D AND HOW WE CHANGE THE  
WORLD

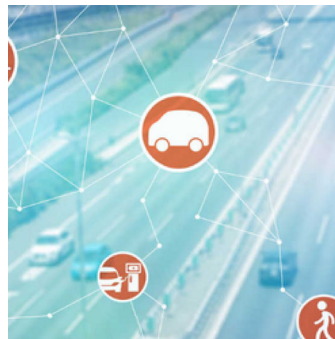
***FEBRUARY 5, 2025***

***Food & QA with Leader in the Division***

***Time: 2 PM HST***

***Location: HH244***

Southwest Research Institute® (SwRI®) has over 10 years of experience developing, deploying, and testing connected vehicle (CV) technologies. SwRI has also been involved in CV standards development, and has supported the establishment of a certification environment to qualify CV devices against those standards. As part of this, SwRI has developed a comprehensive test tool suite to verify conformance to the SAE J2945/1 standard (On-Board System Requirements for V2V Safety Communications).



***Want to learn more?***

Make sure to join us for a presentation

Check us out at [swri.org](http://swri.org)

Apply with us at [swri.jobs](http://swri.jobs)

Fun Facts about Campus & SwRI

- 1500 acres of state-of-the-art test labs and facilities
- Walking Trails, Intramurals, On-site Cafe with Starbucks
- Medical Clinic, Clubs, Employee Groups, On-campus events
- Internal Research Fund, Relocation, Tuition Reimbursement

**swri.jobs**

**Follow us on Social**

Southwest Research Institute® is a premier independent, nonprofit research and development organization using multidisciplinary services to provide solutions to some of the world's most challenging scientific and engineering problems. Headquartered in San Antonio, Texas, our client-focused, client-funded organization occupies 1,500 acres, providing more than 2.3 million square feet of laboratories, test facilities, workshops, and offices for approximately 3,000 employees who perform contract work for government and industry clients.

