

Boston Big Dig



CEE 491
Maja Caroe
Travis Satsuma
Sean Schultz
James Tokishi

Presentation Contents

- Project overview
- Project use and benefits
- Technical issues and innovations
- Social problems and policy issues



Project overview

- Length: 7.5 miles, 8-10 lanes
- Excavation
 - 16 million cy
- Concrete
 - 3.8 million cy
- Price:
 - Estimated: \$6 billion (2006\$)
 - Actual (2006): \$14.6 billion
 - Final: \$22 billion
- Funding
 - State and federal (public)



Project use and positive impacts

■ Traffic

- 1959 – 75,000 AADT
- 1990s - >190,000 AADT

■ Positive impacts

- Reduces downtown congestion
- Allow more people to travel during peak periods
- 12% reduction in CO levels
- 85.6% corridor travel time reduction
- 300 acres new open land and parks



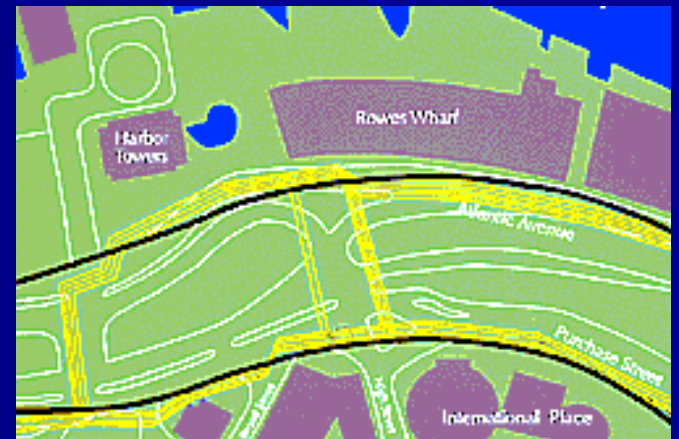
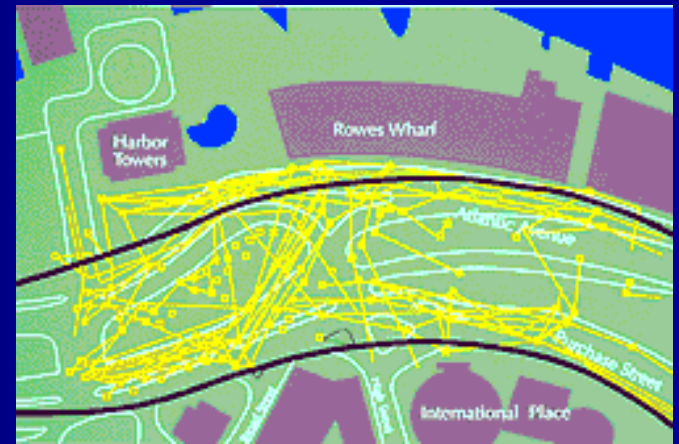
Technical issues and innovations

■ Issues

- Huge excavation
- Large sections in tunnels
- Interstate interchanges rebuilt
- Building within city

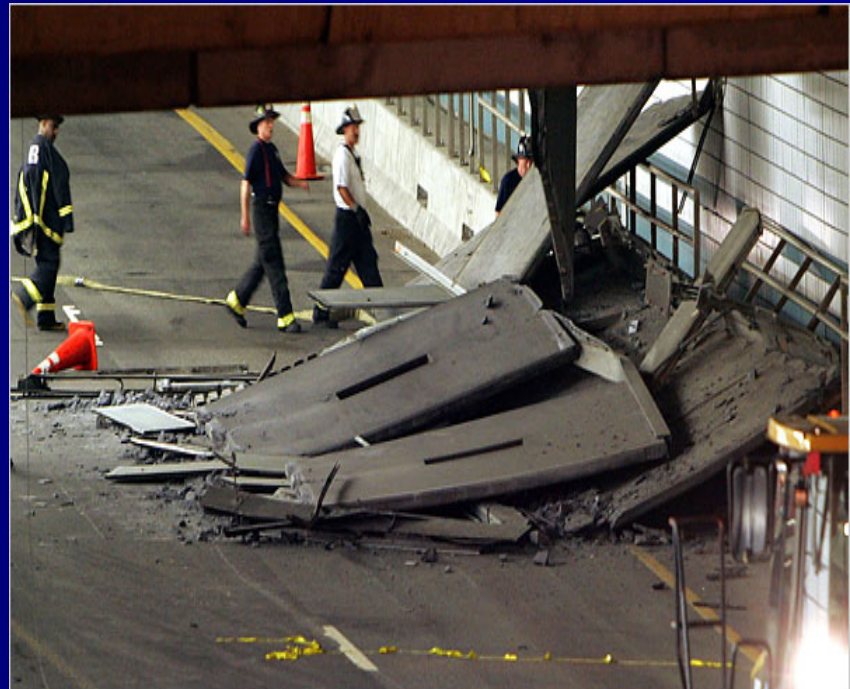
■ Innovations

- Freezing soil to install 30,000 ton road bed under train tracks
- Reconfiguring underground utilities
- Building under existing traffic



Social problems and policy issues

- Cost overruns
 - \$6billion - \$22 billion
- Construction problems
 - 2006 ceiling collapse
 - “Thousands of leaks”
 - Substandard materials



Questions?