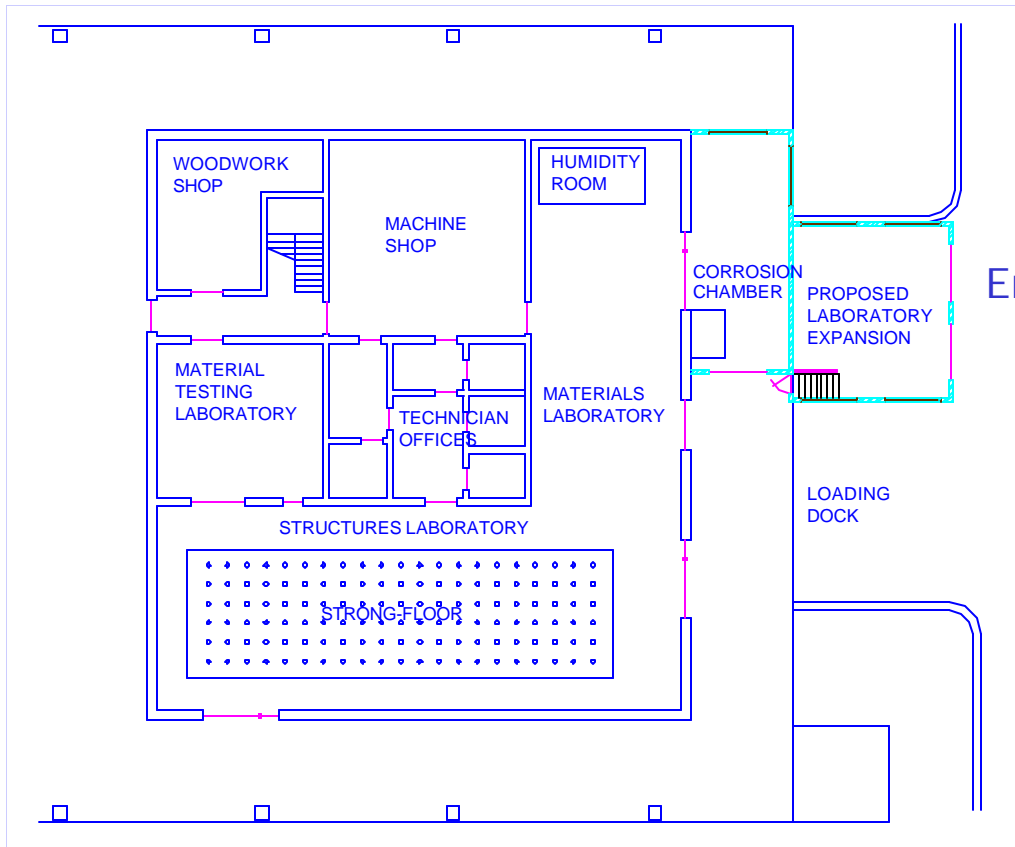


University of Hawaii at Manoa Structural Testing Laboratory

Holmes Hall
College of
Engineering



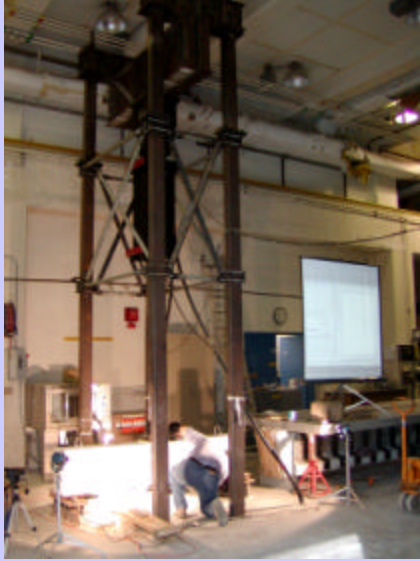
Structural
Engineering Testing
Laboratory

Department of
Civil and
Environmental
Engineering



Department of Civil Engineering
University of Hawai'i at Manoa

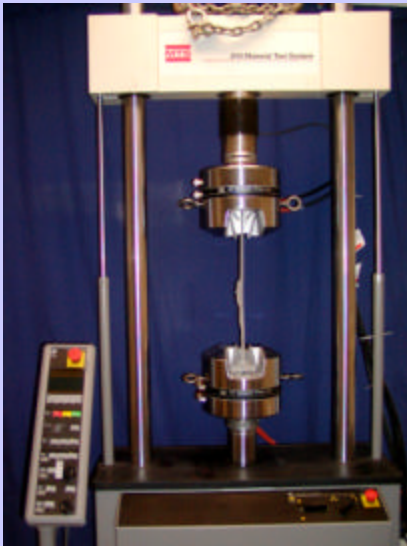
Structural Testing Laboratory



- 60ftx20ft Strong Floor
- Servo-controlled Hydraulic test system
- 300,000 lb 4-post Test Frame
- High-speed data acquisition



Material Testing Laboratory



- 55,000 lb 2-post MTS Hydraulic Universal Test Frame
- 30,000 lb 2-post Instron mechanical universal Test Frame
- High-speed data acquisition



Controlled Environment Facilities



Constant Humidity and Temperature Basement



Cyclic Corrosion Chamber



High Humidity Room