

Cold-Formed Steel Top Plate Testing

by
Hawaii Chapter of LGSEA and
University of Hawaii at Manoa



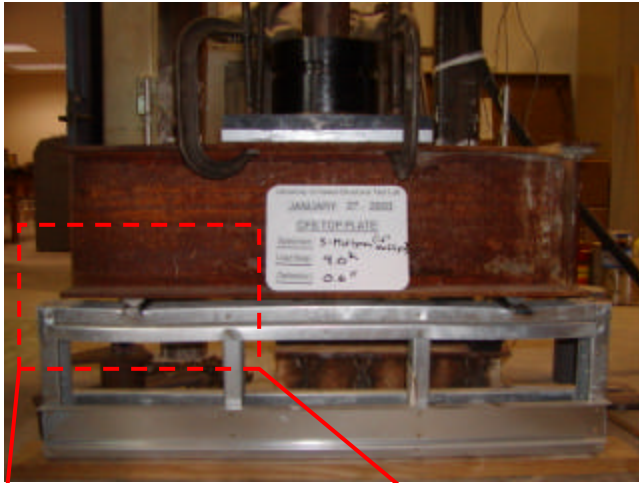
Steel Framing Alliance™

Steel. The Better Builder.

Department of Civil Engineering
University of Hawai'i at Manoa



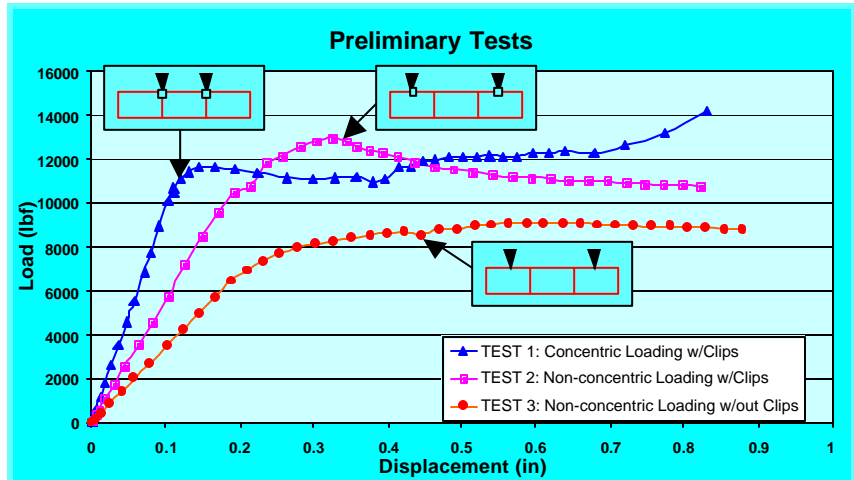
**Light Gauge Steel
Engineers Association**



Non-concentric w/o clips

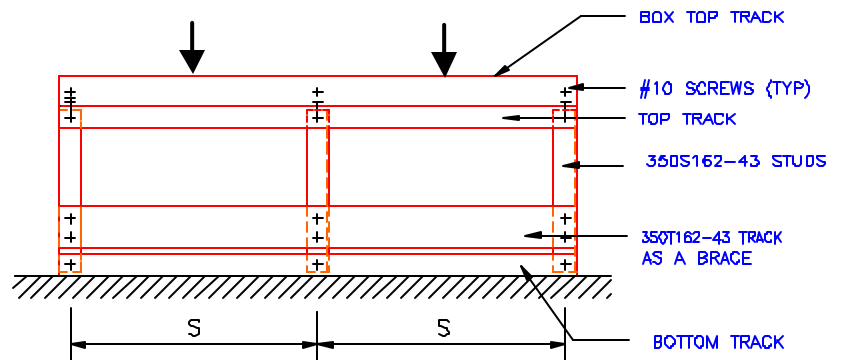
Preliminary Tests

- Three-bay specimens
- 16" stud spacing
- 43 mil box top track
- Concentric and non-concentric
- With and without clips

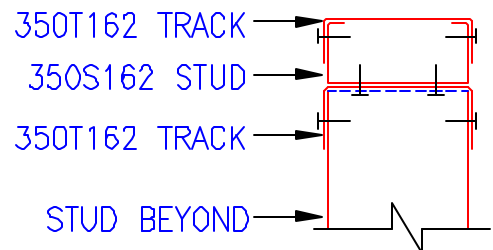


Phase I Specimens

- Two-bay specimens
- 16" & 24" stud spacing
- 33, 43 & 54 mil box track
- S1 or S2 screw patterns



Specimen	Stud Spacing S (in)	Box Track Gage (mil)	Screw Pattern
1-3	16	33	S1
4-6	16	43	S1
7-9	16	54	S1
10-12	24	43	S2
13-15	24	43	S2



Box Track Cross-section